

HESSE FLATOW

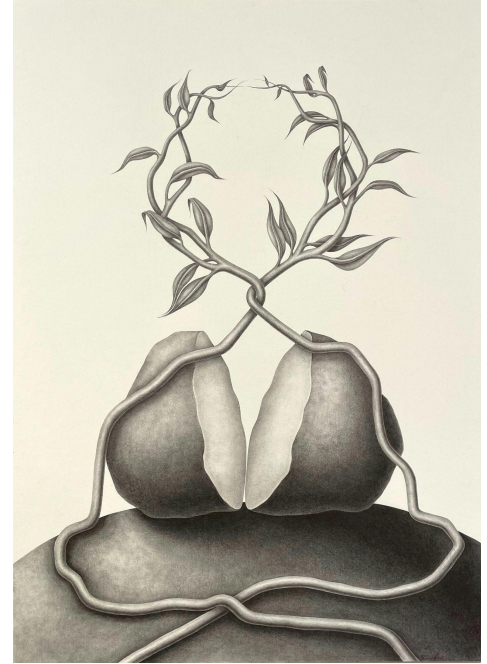
Devra Fox: *Stem*

October 14 – November 13, 2021

Reception October 14: 6-8 PM

General Inquiries: info@hesseflatow.com

Hesse Flatow is pleased to present *Stem*, a solo exhibition of drawings by San Francisco-based artist Devra Fox. For the exhibition, which includes thirteen graphite drawings—ten of which have never been seen before—Fox continues to capture the transformations we witness on a daily basis: in our physical bodies, emotional consciousnesses, and in the natural world. Depicting sinewy pieces of furniture varnished out of roots and branches, architectural elements taken over by nature, and imagined plants, Fox's drawings embody the idea of growth in absence. Her poignant exhibition asks: how do we continue to progress and live with death, and how does nature continue to thrive in the absence of the living?



In this group of drawings, Fox returns to a recurring motif of a stone—symbolizing the permanence of the soul in Jewish tradition—and concepts such as relational systems of support and containment. In one group of drawings, vines grow around variations of a stone, symbolizing the symbiotic relationship between growth and the concept of the permanence of the soul. Other works explore the balance and tension found in relational support systems. In some, innate objects like tables and chairs take on a quality of life, conveying the inevitable connection between the object and owner, and in others, components simultaneously lean on, pull away from, and gently hold each other and themselves. Fox says: “I am compelled by the desire for and expressions of bodily containment; the concept of nature, and our powerlessness to sway it. I question how these reactions seep outside our bodies, molding our physicality and creating attachment to places and objects.”

HESSE FLATOW

Devra Fox (b. 1989) received her MFA in Visual Art from Columbia University in 2016 and BA in Studio Art from Bard College in 2012. She has participated in residencies at Pocoapoco, The Women's Studio Workshop, The Vermont Studio Center, Kala Art Institute and was a Visiting Artist at Cow House Studios. She has shown across the USA and internationally in Germany and China. Devra lives and works as an artist and educator in San Francisco, CA.

Image: Devra Fox, *A Persistent Cycle*, 2021. Graphite on paper, 14.75 in x 21 in.
Courtesy of the artist and Hesse Flatow