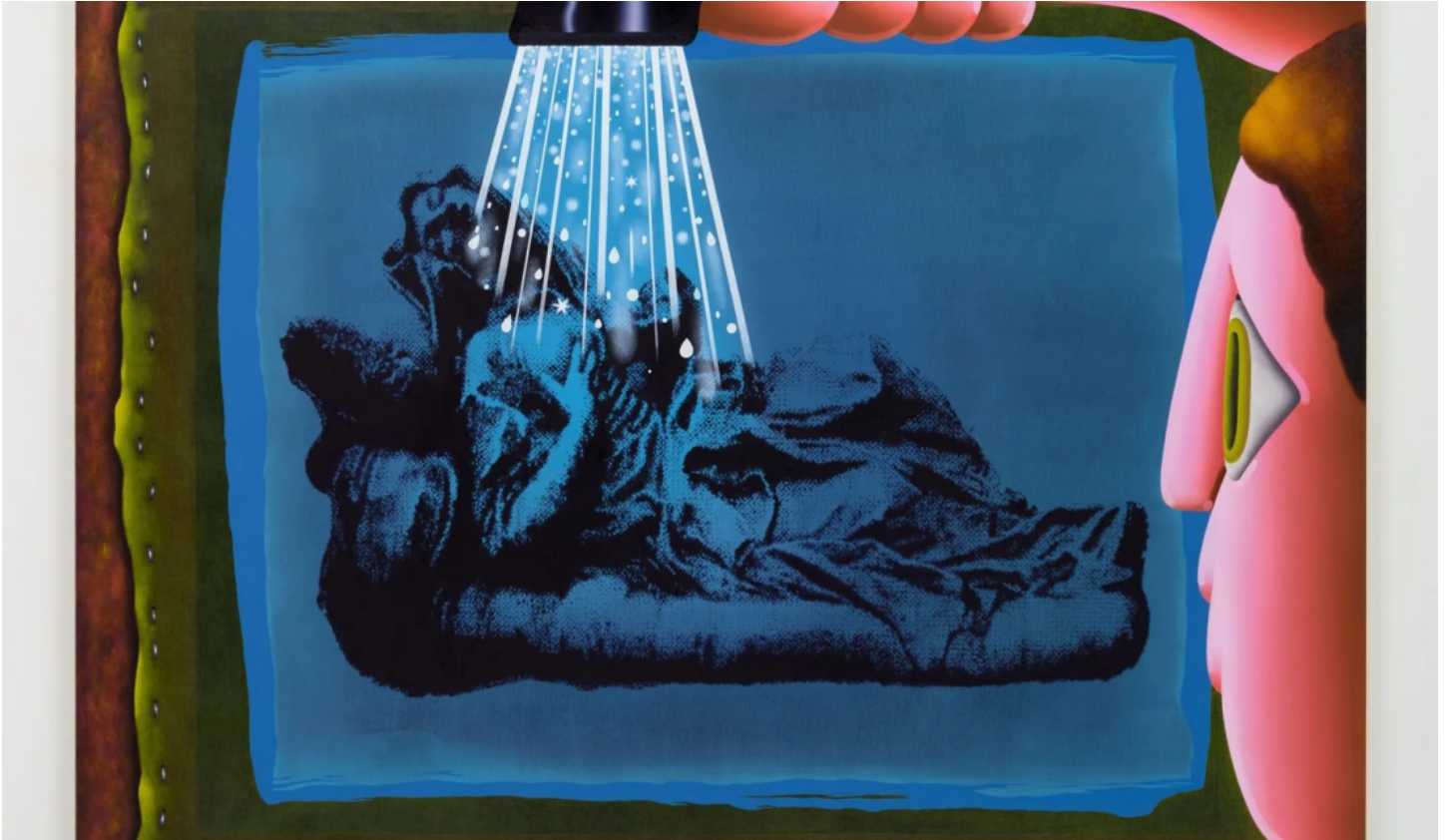


HESSE FLATOW

Novi, Ana. (2025, December 8). "New Gravity: The 8 Best Booths of NADA Miami 2025." *Whitewall*. Online.



New Gravity: The 8 Best Booths of NADA Miami 2025

Where material rigor, emotional depth, and contemporary vision converge at NADA Miami 2025.

NADA Miami 2025 opens with a distinct charge in the air — a fair buzzing with excitement around the clarity, rigor, and depth of its presentations. Across the booths, artists are leaning into atmosphere, instinct, and finely tuned material sensibility, creating works that pull viewers into intimate, self-contained worlds. There is a sense of precision everywhere: ideas distilled rather than overstated, gestures sharpened rather than embellished. From fractured digital imaginaries to mythic interiorities and quiet ecological poetics, the strongest booths feel both deeply personal and acutely attuned to the present. These are the presentations shaping the fair's inner rhythm — the ones where vision, craft, and future promise align with uncommon clarity.

HESSE FLATOW

Novi, Ana. (2025, December 8). "New Gravity: The 8 Best Booths of NADA Miami 2025." *Whitewall*. Online.

Hesse Flatow — The Politics and Poetics of the Tablescape



Courtesy of Hesse Flatow.

Hesse Flatow at NADA Miami presents a thoughtful meditation on the still life as a site of cultural, emotional, and political tension. **Lizzie Gill**'s piped-surface compositions reinterpret the domestic tableau through symbolism and generational memory; **Katherine Vetne** complicates taste and morality through metalpoint and sculptural distortion; **Xiao Wang** offers lush, hyper-real tableaus that oscillate between abundance and vanitas; and **Katie Butler** weaponizes humor and Americana to critique economic disparity and systemic decay. Together, they recast the tablescape not as a decorative motif but as a stage on which power, desire, decay, and continuity play out.

What we love: A sharp, conceptually unified booth that transforms the familiar table into a site of revelation.